



JANUARY 1999

1303.8

BUSINESS INDICATORS

**AUSTRALIAN
CAPITAL
TERRITORY**

EMBARGO: 11:30AM (CANBERRA TIME) MON 25 JAN 1999

C O N T E N T S

	<i>page</i>
Notes	2
Summary of findings	3
Selected business indicators	5
 FEATURE ARTICLE	
Education and Training Experience of ACT Residents	6

T A B L E S

1 Business expectations: Sales, March quarter 1999/ December quarter 1999, expected aggregate change	10
2 Business indicators, January 1999	11
3 ACT in relation to the rest of Australia	14
4 ACT in relation to the rest of Australia—percentage changes	15

- For more information about statistics in this publication and the availability of related unpublished statistics, contact Will Blythe on Canberra 02 6205 0032 or any ABS office shown on the back cover of this publication.

NOTES

FORTHCOMING ISSUES

<i>ISSUE</i>	<i>RELEASE DATE</i>
February	22 February 1999
March	22 March 1999
April	19 April 1999
May	24 May 1999
June	21 June 1999
July	19 July 1999

SYMBOLS AND OTHER USAGES

ACT	Australian Capital Territory
n.a.	not available
n.p.	not available for publication
p	preliminary
*	Represents data with a standard error of greater than 25%. Caution should be exercised when using this data.
—	nil or rounded to zero

Dalma Jacobs
Regional Director, Australian Capital Territory

SUMMARY OF FINDINGS

UPDATED SERIES

Series updated since the December 1998 issue are: population, labour force, industrial disputes, retail trade, housing finance, motor vehicle registrations, job vacancies, tourism indicators, tourist accommodation, engineering construction, housing and construction, and business expectations. The feature article on pages 6–9 is on Education and Training Experience of ACT Residents.

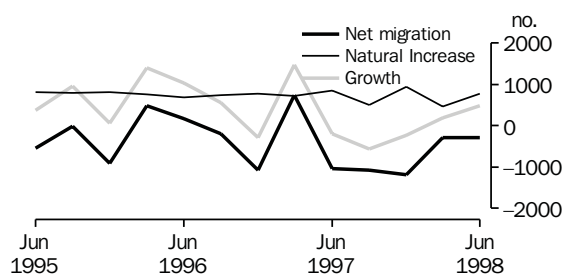
NOTABLE MOVEMENTS

Population	Population figures for the ACT for June quarter 1998 contains revised estimates of resident population. The method for estimating interstate migration, births, deaths and infant deaths have been changed and therefore previous and current estimates have been revised. The estimated resident population of the ACT for June quarter 1998 was 308,411, an increase of 485 (0.2%) persons since the March quarter 1998 and an increase of 400 persons since the June quarter 1997. The population for the 12 months to June 1998 for the ACT showed an increase of 0.1%, while Australia's total population grew by 1.2%. For the June quarter 1998, net migration showed a loss of 294 residents, with both net overseas migration and net interstate migration from the Territory being negative. Net interstate migration has been negative since September quarter 1996.
Labour force	In December 1998, the trend unemployment rate for the ACT was 6.2%, a 0.1% decrease from the previous month and the lowest rate since May 1991. Trend employment decreased 0.1% (to 156,600 persons) and the trend participation rate dropped 0.3% to 70.7% from the previous period. Nationally, trend employment increased by 0.1% from the previous period and the trend unemployment rate dropped by 0.1% to 7.7%.
Job vacancies	There were 1,500 job vacancies in the ACT for the November quarter 1998, which represents a 16.7% decrease from the previous quarter and 50.0 % increase from the corresponding quarter of the previous year. Nationally, job vacancies for November 1998 increased 6.0% since the previous quarter and increased 13.7% on the corresponding quarter of the previous year.
Housing finance	The trend number of dwelling units financed (including refinancing) in the ACT during November 1998 was 729, the same level as in the previous month. The trend estimate for the value of commitments in the ACT was \$84 million, an increase of \$1 million on the previous month. Refinancing of existing dwellings comprised 13.8% of the total value of dwelling units financed in November 1998, a 7.7% decrease on the previous month.

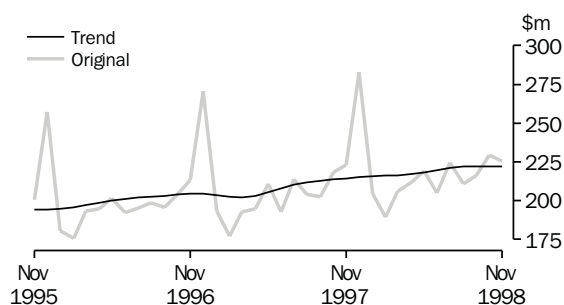
Retail turnover	<p>The trend estimate for retail turnover in the ACT for November 1998 was \$221.9 million, down 0.1% on the previous month's figure and up 5.0% on twelve months ago. The national trend retail turnover recorded an increase of 0.5% on the previous month and was up 5.4% on a year ago.</p>
Engineering construction	<p>The value of construction work done by the public sector in the ACT during the September quarter 1998 decreased by 31.7% or \$9.6 million to \$20.7 million from the previous quarter and increased \$5.0 million or 31.8% on the September quarter 1997. Nationally, the value of public sector work done decreased 32.1% from the previous quarter and increased 5.9% on the September quarter 1997.</p> <p>The value of engineering construction work done by the private sector in the ACT during the September quarter 1998 decreased by 14.3% to \$10.8 million from the previous quarter and increased 35.0% or \$2.8 million on the September quarter 1997. Nationally, the value of private sector engineering construction work done was up 4.1% from the previous quarter and was up 9.4% on the September quarter 1997.</p>
Housing and construction	<p>The trend number of dwelling units approved in the ACT decreased by 18.7% to 100 dwelling units in November 1998. Nationally, the trend number of dwelling units approved decreased by 0.3% to 12,390 dwelling units in November 1998.</p> <p>The value of non-residential building approvals in the ACT was \$6.2 million in November 1998, an increase of \$2.4 million (up 63.2%) from the previous month and \$20.2 million (76.5%) lower than November 1997. Nationally, the value of non-residential building approvals decreased by 1.3% from the previous month and was up 11.8% from November 1997. Takings from accommodation were \$22.5 million for the September quarter 1998 in the ACT, up 0.9% on the previous quarter and up 4.7% from the corresponding quarter of the previous year. Nationally, takings from accommodation decreased 7.8% from the previous quarter and increased 50% from the previous year to \$955.5 million.</p>
Business expectations	<p>Business expectations in the ACT indicate a 2.7 % decrease in expected income from the sales of goods and services in the short term for the March quarter 1999. Nationally, there is an expected short term decrease of 0.9% in the March quarter 1999. In the medium term (December quarter 1998 to December quarter 1999), growth of 2.6% in sales is expected for the ACT, which is a little below the national expectation of 2.7%.</p>

SELECTED BUSINESS INDICATORS

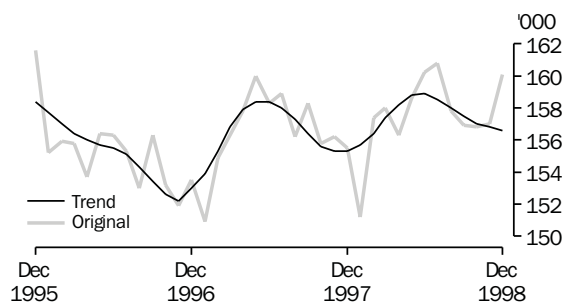
COMPONENTS OF POPULATION GROWTH,
Years ending June



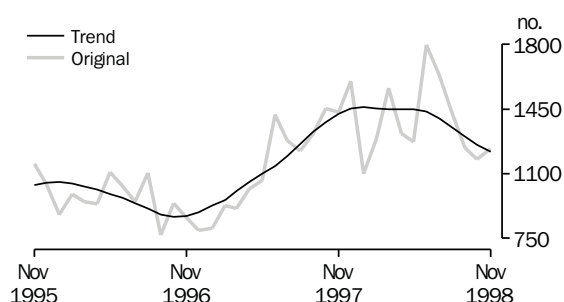
RETAIL TURNOVER



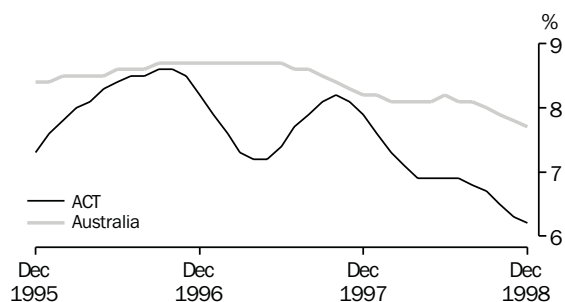
LABOUR FORCE—EMPLOYMENT



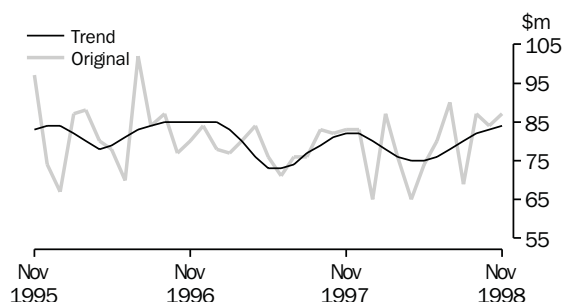
NEW MOTOR VEHICLE REGISTRATIONS



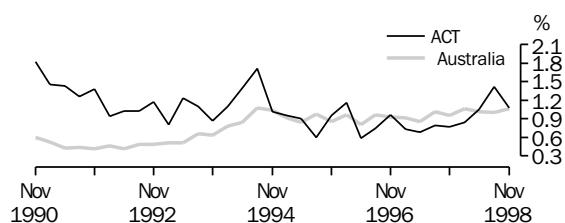
LABOUR FORCE—TREND UNEMPLOYMENT RATE



HOUSING FINANCE

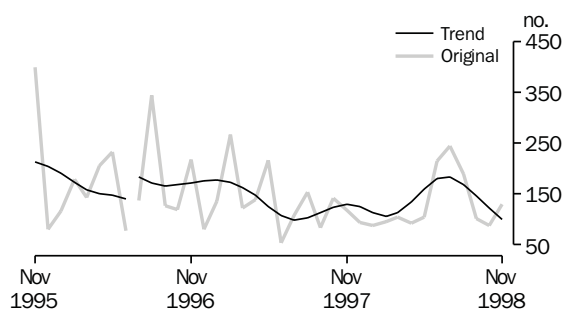


JOB VACANCY RATES, ACT AND AUSTRALIA—1990 TO 1998



Note: Job vacancy rate is calculated by expressing the number of job vacancies as a percentage of the number of employees plus vacancies.

BUILDING APPROVAL—DWELLING UNITS APPROVED



Note: For the period July to December 1996, 165 dwelling units and total building work of \$40.5 million (16%) had been incorrectly omitted from data reported to ABS. All series for the ACT have been revised from July 1996 and a trend break has been included in the graph.

FEATURE ARTICLE

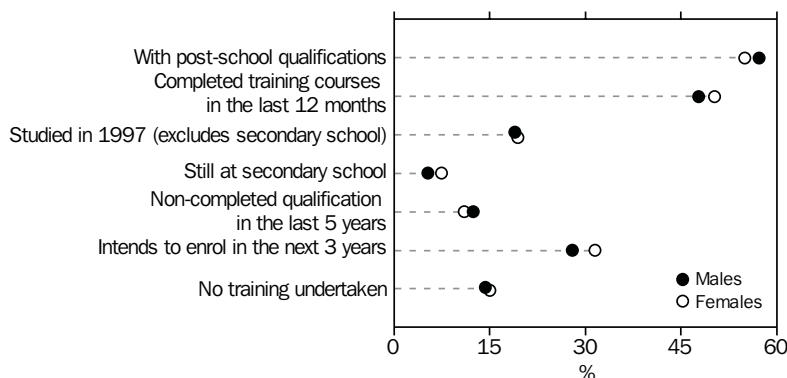
EDUCATION AND TRAINING EXPERIENCE OF ACT RESIDENTS

Education and training profile

There were 93,800 people aged 15–64 years in the ACT who had completed at least one training course in the 12 month period prior to the conduct of the survey (March to May 1997). They represented 48.9% of the total 191,700 persons aged 15–64 years. A total of 107,800 (56.2%) persons held at least one post-school qualification. Of this group, 52.8% were men and 47.2% were women. Nationally, 48.8% of persons aged 15–64 years held post-school qualifications, of which 55.8% were men and 44.2% were women.

At the time of the survey there were 181,200 persons (94.5%) aged 15–64 years who were in or marginally attached to the labour force. This group includes persons who were employed, unemployed or marginally attached to the labour force. Of the people aged 15–64 years, 22,500 (11.7%) started, but did not complete, an educational qualification in the last five years, while 56,900 (29.7%) intended to enrol to study for an educational qualification in the next three years. Some 28,100 (14.7%) had no training undertaken in the last 12 months prior to the survey. The chart below provides a summary of the education and training status of persons aged 15–64 years in the ACT.

EDUCATION AND TRAINING STATUS

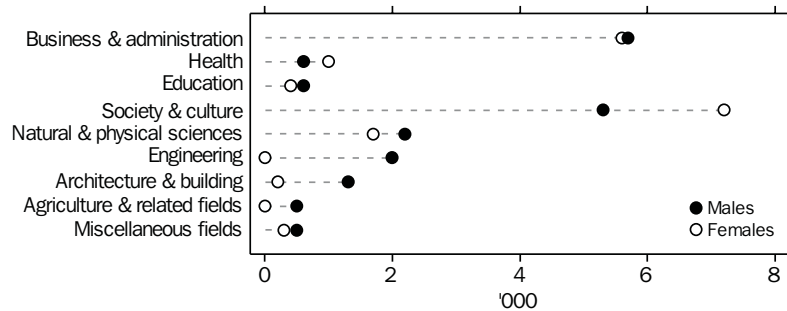


Note: Due to multi-response categories collected, components may not add to totals.

Of the 153,100 persons with a wage or salary job in the last 12 months, 134,400 or 87.7% undertook some form of training in the 12 month period. Nationally, 80.2% of wage and salary earners undertook some form of training in the corresponding period.

Education and training profile <i>continued</i>	<p>Enrolment intentions for the next three years among 15–20 year olds who were still at secondary school were high in the ACT at 84.6% intending to enrol. However, only 41.7% intended to enrol for a post-school qualification and 41.7% did not have details of intended qualification. The ACT average for enrolment intentions among 15–20 year olds who were still at secondary school was higher than the national average of 72.2%.</p> <p>The mix of institutions attended by persons in the ACT enrolled for post-school qualifications varied, with a recorded 62.0% at university and 28.2% at TAFE or technical college. This compares with the national figures of 53.2% attending university and 34.5% at TAFE or technical college.</p> <p>Other key findings about training courses completed by persons in the ACT in the 12 months prior to the survey indicated that the average time spent on training courses was 20 hours. Only 8% incurred a cost to the participant, with the average cost being \$453. It was further reported that 88% of training courses undertaken while working were considered to have improved job performance.</p>
Persons enrolled to study in 1997	<p>Of those enrolled in 1997 in the ACT the largest group comprised the 16,400 persons studying for a Bachelor degree, the majority (61.0%) of this group studying full time, followed by 4,300 persons studying for Basic vocational qualifications. The smallest groups were the 2,900 persons studying for a Post-graduate diploma, and the 2,000 persons studying for an Associate diploma.</p> <p>The Survey also found that 35,500 people in the ACT enrolled to study for a post-school qualification in 1997 (excluding those aged 15 to 20 and still at secondary school). Of these, 30.4% received financial support for that study from their employer, and 41.4% received financial support from other sources. In 1997, there were almost as many students enrolled part-time (13,300) as full-time (15,500). The additional 6,700 students were enrolled externally.</p> <p>Of the 12,200 people aged 15–20 years and still at secondary school in the ACT at the time of the survey, 96.7% said that they intended to complete their schooling. Only 10.0% of students aged 15–20 years still at secondary school received payments from Austudy or other sources.</p> <p>Overall, the field of study with the greatest number of enrolments in the ACT was Society and culture (12,500 of whom 42.4% were males and 57.6% were females), followed by Business and administration (11,300 of whom 50.4% were males and 49.6% were females). More females were enrolled in the Health field than males, while the fields of Natural and physical sciences, Engineering, and Architecture and building had more males enrolled than females. The field of study with the smallest number of enrolments was Agriculture and related fields with only about 500 persons enrolled.</p>

FIELD OF STUDY



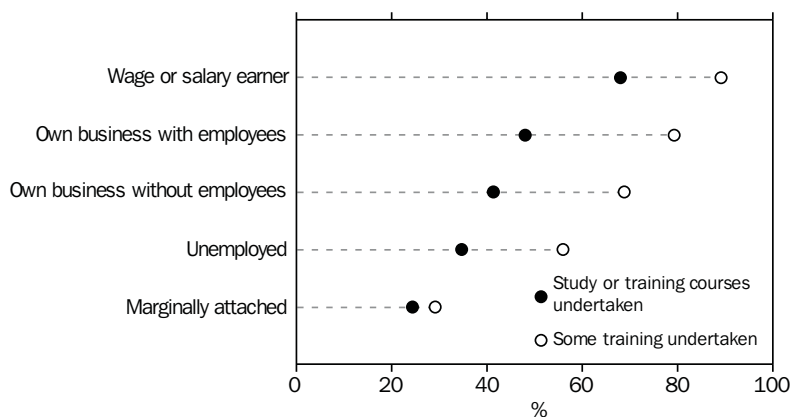
Note: Due to the small numbers in the sample survey for data broken down to this level, the numbers for the fields of Health, Education, Engineering, Architecture and building, Agriculture and related fields, and Miscellaneous fields are indicative only and may have a high standard error.

Training undertaken In the last 12 months prior to the survey, 87.7% of the 153,100 persons in the ACT who were wage or salary earners during that period undertook some form of training. There were more wage or salary earners (42.7%) who undertook in-house training courses than those who undertook external training courses (25.8%).

The extent of participation in study or training courses varied considerably according to employment status of people in the ACT. These ranged from 24.4% of those who were marginally attached to the labour force to 67.9% who were wage or salary earners. Nationally, the extent of participation in study or training courses ranged from 21.3% of those who were marginally attached to the labour force to 55.0% of persons who were wage or salary earners.

Notably, participation in study or training by wage or salary earners was highest (77.8%) for people aged 20–24 years and lowest (28.8%) for people aged 15–19 years. The trend in study or training participation decreased as persons got older, however, majority (55.8%) of 55–64 year old wage or salary earners undertook study or training.

EMPLOYMENT STATUS AND PARTICIPATION IN TRAINING



Non-completed
qualification/not studying

In the ACT, of the 22,500 persons who were enrolled for, but did not complete, an educational qualification in the five years prior to the survey, 89.3% had enrolled for a post-school qualification. The main reasons given for not completing their qualification were Qualification-related, e.g. did not meet expectations (26.8%); Work-related, e.g. too much work, or scheduling of work and study (25.4%); and Personal or family reasons, e.g. caring for family member or children too young (18.4%).

During the survey, there were 125,500 persons in the ACT (53.3% males and 46.7% females) who did not study for an educational qualification in the last 12 months. "No need" was the most commonly given reason by 38.1% of those not undertaking study, and by 40.1% of those not undertaking training courses. Other reasons given for not studying were Work-related (24.8% of males and 15.0% of females), and Personal or family reasons (16.3% of males and 26.8% of females).

The information contained in this report was based on the Survey of Education and Training conducted by the ABS between March and May 1997 using a personal interview strategy. Education is defined as a course of study for which an award is conferred upon completion. Training, on the other hand, includes study for an educational qualification, training courses completed, and any on-the-job training undertaken.

1

BUSINESS EXPECTATIONS: SALES

	<i>ACT</i>	<i>Aust.</i>
<i>Period</i>	%	%
Short-term		
Sep qtr 1997–Dec qtr 1997	0.6	3.0
Dec qtr 1997–Mar qtr 1998	–1.1	–0.3
Mar qtr 1998–Jun qtr 1998	–0.1	1.7
Jun qtr 1998–Sep qtr 1998	2.7	1.1
Sep qtr 1998–Dec qtr 1998	3.5	1.5
Dec qtr 1998–Mar qtr 1999	–2.7	–0.9
Medium-term		
Sep qtr 1997–Sep qtr 1998	1.2	3.9
Dec qtr 1997–Dec qtr 1998	2.9	3.0
Mar qtr 1998–Mar qtr 1999	2.6	2.6
Jun qtr 1998–Jun qtr 1999	6.9	2.7
Sep qtr 1998–Sep qtr 1999	7.5	2.8
Dec qtr 1998–Dec qtr 1999	2.6	2.7

Indicator	Unit	ACT			Aust.		
		Latest figure	% change from		Latest figure	% change from	
			Previous period	Same period previous year		Previous period	Same period previous year
POPULATION, VITAL AND LABOUR							
POPULATION, Mar qtr 98	'000	308.4	0.2	0.1	18 751.0	0.3	1.2
Natural increase	no.	779	64.7	5.0	31 830	3.1	-0.7
Net migration	no.	-294	-606.9	-78.8	17 531	-63.3	189.2
Total increase	no.	485	-8.7	-175.0	49 361	-37.2	29.5
LABOUR FORCE, Dec 98							
Original Series							
Employed	'000	160.1	2.0	3.0	8 795.3	1.6	2.1
Unemployed	'000	9.6	-2.0	-28.9	706.5	-0.6	-7.5
Unemployment rate	%	5.7	-0.2	-2.3	7.4	-0.2	-0.7
Participation rate	%	71.9	1.1	0.1	63.9	0.8	—
Long-term unemployed, Nov 98	no.	3 318	9.5	53.9	244 222	5.3	-1.6
Long-term unemployed as percentage of total unemployed	—	33.7	3.9	16.5	34.4	0.6	0.7
Trend series							
Employed	'000	156.6	-0.1	0.8	8 681.0	0.1	2.1
Unemployed	'000	10.3	-2.8	-23.1	722.8	-1.3	-5.4
Unemployment rate	%	6.2	-0.1	-1.7	7.7	-0.1	-0.5
Participation rate	%	70.7	-0.3	-0.9	63.2	-0.1	—
WAGE AND SALARY EARNERS, May 98							
Trend series							
Public Sector	'000	68.7	-1.0	1.9	1 460.0	0.1	-1.0
Private Sector	'000	69.3	1.2	-6.6	5 408.1	1.0	1.0
Total	'000	138.0	0.1	-2.5	6 868.1	0.8	0.6
JOB VACANCIES, Nov 98	'000	1.5	-16.7	50.0	77.4	6.0	13.7
INDUSTRIAL DISPUTES IN PROGRESS, Sep 98							
Working days lost	'000	0.1	-66.7	-50.0	47.8	-14.5	-7.9
Days lost per '000 employees (year ended Sep 98)	no.	32.0	-3.0	52.4	82.0	-1.2	26.2
BUILDING AND CONSTRUCTION							
HOUSING FINANCE, Nov 98							
Secured commitments to individuals for							
Original Series							
Construction of dwellings	\$m	8.0	60.0	14.3	713.0	-1.1	9.0
Purchase of new dwellings	\$m	2.0	-33.3	—	246.0	7.0	1.2
Purchase of established dwellings	\$m	55.0	-5.2	-1.8	4 009.0	10.7	12.8
Re-financing	\$m	12.0	-7.7	-20.0	793.0	10.4	7.3
Total housing commitments	\$m	87.0	3.6	4.8	4 967.0	8.6	11.6
Seasonally adjusted series							
Total housing commitments	\$m	84.0	-4.5	-1.2	4 949.0	8.1	7.6
Trend series							
Dwelling units financed	no.	729	—	-1.1	37 709	-0.1	-6.0
Total housing commitments	\$m	84.0	1.2	2.4	4 671.0	1.1	1.8
BUILDING APPROVALS, Nov 98							
Original series							
Dwelling units	no.	130	47.7	11.1	13 122	6.4	0.3
Value of new residential	\$m	15.9	33.6	20.5	1 492.0	7.2	7.3
Value of residential alterations and additions	\$m	4.5	-31.8	21.6	247.7	3.6	8.6
Value of non-residential	\$m	6.2	63.2	-76.5	1 109.2	-1.3	11.8
Value of total building	\$m	26.6	19.3	-38.6	2 848.9	3.5	9.1
Trend series							
Dwelling units	no.	100	-18.7	-23.1	12 390	-0.3	-4.1

Indicator	Unit	ACT			Aust.		
		Latest figure	Previous period	Same period previous year	% change from		
					Latest figure	Previous period	Same period previous year
BUILDING AND CONSTRUCTION continued							
BUILDING COMMENCEMENTS, Jun qtr 98							
New houses	no.	237	-4.8	-29.3	26 207	9.7	21.9
Value of houses commenced	\$m	30.2	2.4	-23.7	3 034.4	14.1	28.1
Value of non-residential building commenced	\$m	87.8	-33.1	54.9	3 246.1	-8.3	21.0
Value of total commencements	\$m	135.9	-22.7	3.5	8 241.3	2.2	25.5
PRICE INDEXES							
Established house price index, Sep qtr 98	—	126.7	0.2	1.3	126.9	—	6.7
ENGINEERING CONSTRUCTION (Sep Qtr 98)							
Private sector							
Value of work commenced	\$m	9.5	-31.7	15.9	2 244.3	-10.8	-20.4
Value of work done	\$m	10.8	-14.3	35.0	2 981.9	4.1	27.2
Value of work yet to be done	\$m	13.8	13.1	-38.4	5 906.7	-8.5	-6.2
Value of work done by public sector	\$m	20.7	-31.7	31.8	1 347.4	-32.1	5.9
PRICES, WAGES AND CONSUMER SPENDING							
CONSUMER PRICE INDEX, Sep qtr 98							
Food	(a)	127.6	0.6	3.8	124.7	1.3	3.2
Housing	(a)	93.8	0.4	-3.3	94.8	0.3	-1.1
Transportation	(a)	128.0	-0.9	-2.0	122.3	-0.4	-1.7
All groups	(a)	121.3	0.1	1.3	121.3	0.2	1.3
AVERAGE WEEKLY EARNINGS, Aug 98							
Original series							
Males	\$	839.6	1.7	7.7	721.8	1.0	4.0
Females	\$	613.2	2.4	6.3	473.8	1.2	3.0
Persons	\$	729.0	1.9	7.6	602.9	1.1	3.6
Trend series							
Males	\$	843.6	1.7	8.3	722.7	0.7	3.6
Females	\$	613.1	1.2	5.7	472.9	0.6	2.2
Persons	\$	732.4	1.6	7.7	602.9	0.7	3.0
RETAIL TURNOVER, Nov 98							
Original series							
Food retailing	\$m	79.9	-4.2	-3.4	4 707.9	-5.1	3.7
Department stores	\$m	25.8	7.9	-1.9	1 150.2	11.4	3.5
Hospitality and services	\$m	37.5	-5.1	9.3	2 066.4	-1.9	8.5
All other retailing	\$m	82.2	-0.4	2.9	4 012.2	0.6	1.9
Total	\$m	225.4	-1.7	1.0	11 936.7	-1.2	3.9
Trend series							
Food retailing	\$m	80.1	-0.5	-0.6	4 766.4	0.4	5.2
Department stores	\$m	24.6	-0.4	1.2	1 059.7	0.9	5.3
Hospitality and services	\$m	36.8	1.1	12.2	2 044.3	0.9	10.2
All other retailing	\$m	80.4	-0.1	5.0	3 917.9	0.5	3.2
Total	\$m	221.9	-0.1	3.5	11 788.3	0.5	5.4

(a) Base year: 1989-90=100.0.

Indicator	Unit	ACT			Aust.		
		% change from			% change from		
		Latest figure	Previous period	Same period previous year	Latest figure	Previous period	Same period previous year
TOURISM AND TRANSPORT							
HOTELS, MOTELS AND GUEST HOUSE ACCOMMODATION, Sep qtr 98							
Original series							
Room nights	'000	226.0	n.a	1.8	9 639.4	10.5	3.5
Takings at current prices	\$m	22.5	n.a	4.7	998.1	n.a	4.5
Guest arrivals	'000	175.8	n.a	n.a	7 869.0	n.a	n.a
Guest nights	'000	386.2	n.a	n.a	17 181.6	n.a	n.a
Room occupancy rate	%	58.4	n.a	0.5	58.7	7.5	-1.5
NEW MOTOR VEHICLE REGISTRATIONS, Nov 98							
Motor vehicles	no.	1 237	4.8	-13.7	67 998	5.2	10.6
Seasonally adjusted motor vehicles	no.	1 214	-1.5	-17.6	68 712	7.6	8.1
Trend motor vehicles	no.	1 218	-2.9	-14.6	65 973	-0.8	3.5
AGGREGATE INDICATORS							
STATE ACCOUNTS, 1996-97(a)							
Original series (at average 1989-90 prices)							
Private final consumption expenditure	\$m	4 981	3.6	n.a.	269 954	2.4	n.a.
Government final consumption expenditure	\$m	5 744	-2.7	n.a.	72 844	1.5	n.a.
Private gross fixed capital expenditure	\$m	755	2.6	n.a.	85 505	12.1	n.a.
Government gross fixed capital expenditure	\$m	593	24.6	n.a.	18 685	-5.6	n.a.
Final demand	\$m	11 972	-0.4	n.a.	446 989	3.6	n.a.
Gross state product	\$m	8 813	0.6	n.a.	450 575	3.0	n.a.
Original series (at current prices)							
Private final consumption expenditure	\$m	5 781	4.0	n.a.	318 480	4.0	n.a.
Government final consumption expenditure	\$m	7 011	0.6	n.a.	86 421	3.6	n.a.
Private gross fixed capital expenditure	\$m	804	-1.6	n.a.	86 304	7.9	n.a.
Government gross fixed capital expenditure	\$m	440	-14.6	n.a.	19 230	-5.2	n.a.
Final demand	\$m	14 037	1.3	n.a.	510 435	4.2	n.a.
Gross state product	\$m	10 845	5.0	n.a.	516 306	4.9	n.a.

(a) Quarterly state final demand details are released as a special data service (product no. 5206.0.40.001).

Source: ABS Catalogue nos: 3101.0, 5242.0, 5609.0, 6202.0, 6203.0, 6302.0, 6321.0, 6354.0, 6401.0, 6408.0, 6416.0, 8501.0, 8634.0, 8635.8, 8731.0, 8752.0, 9214.0, 9301.0.

<i>Indicator</i>	<i>Unit</i>	<i>Latest period</i>	<i>NSW</i>	<i>Vic.</i>	<i>Qld</i>	<i>SA</i>	<i>WA</i>	<i>Tas.</i>	<i>NT</i>	<i>ACT</i>	<i>Aust.</i>
POPULATION											
	'000	Jun qtr 98	6 341.6	4 660.9	3 456.3	1 487.3	1 831.4	471.9	190.0	308.4	18 751.0
LABOUR FORCE											
Employed persons (trend)	'000	Dec 98	2 882.6	2 154.7	1 640.0	661.8	891.9	193.7	93.4	156.6	8 681.0
Unemployment rate (trend)	%	Dec 98	7.1	7.6	8.4	9.4	7.1	10.1	3.9	6.2	7.7
WAGE & SALARY EARNERS											
Public sector (trend)	'000	May 98	472.6	313.8	278.2	117.3	146.7	41.1	21.7	68.7	1 460.0
Private sector (trend)	'000	May 98	1 910.7	1 425.4	910.3	381.4	549.2	115.8	46.0	69.3	5 408.1
Total public and private sector (trend)	'000	May 98	2 383.3	1 739.2	1 188.5	498.7	695.9	156.9	67.6	138.0	6 868.1
STATE ACCOUNTS(a)											
Gross state product at average 1989-90 prices	\$m	Yr 1996-97	152 378	118 338	74 768	31 094	50 665	8 910	4 945	4 981	269 954
Gross state product at current prices	\$m	Yr 1996-97	181 799	133 567	83 366	36 306	54 418	10 587	5 418	5 744	72 844
BUILDING APPROVALS											
Dwelling units approved	no.	Nov 98	4 492	3 439	2 477	606	1 649	108	221	130	13 122
Dwelling units approved (trend)	no.	Nov 98	4 222	3 170	2 488	596	1 567	121	237	100	12 390
Value of non-residential building approved	\$m	Nov 98	461.9	267.9	202.7	58.3	77.0	7.9	27.4	6.2	1 109.2
Value of all buildings approved	\$m	Nov 98	1 141.6	727.2	474.0	128.7	272.4	20.3	58.0	26.6	2 848.9
ENGINEERING CONSTRUCTION											
Value of engineering construction work done	\$m	Sep qtr 98	1 239.0	822.6	985.8	244.7	901.4	53.6	50.7	31.6	4 329.3
AVERAGE WEEKLY EARNINGS											
Full-time adult ordinary time (trend)	\$	Aug 98	757.9	732.0	700.1	693.7	748.6	695.3	747.2	861.2	736.7
RETAIL TRADE											
Retail turnover (trend)	\$m	Nov 98	4 048.6	2 814.9	2 227.0	888.1	1 184.7	266.8	128.4	221.9	11 788.3
HOTELS, MOTELS & GUEST HOUSE ACCOMMODATION											
Room nights occupied	'000	Sep qtr 98	3 077.3	1 464.3	2 850.5	494.6	935.8	194.2	396.8	221.3	8 724.6
Room occupancy rate	%	Sep qtr 98	57.9	54.4	63.6	54.3	59.8	38.8	71.3	59.1	54.6
NEW MOTOR VEHICLE REGISTRATIONS											
Trend	no.	Nov 98	22 662	16 697	12 825	4 225	6 343	1 271	733	1 218	65 973
	<i>Unit</i>	<i>Latest period</i>	<i>Syd.</i>	<i>Melb.</i>	<i>Bris.</i>	<i>Adel.</i>	<i>Perth</i>	<i>Hob.</i>	<i>Dar.</i>	<i>Canb.</i>	<i>Aust.</i>
CONSUMER PRICE INDEX											
Food	(b)	Sep qtr 98	125.1	123.6	123.9	125.9	126.5	124.7	125.2	127.6	124.7
Housing	(b)	Sep qtr 98	102.5	85.3	101.0	91.2	89.6	95.6	113.9	93.8	94.8
Transportation	(b)	Sep qtr 98	123.6	121.0	120.9	121.8	122.6	120.4	120.7	128.0	122.3
All Groups	(b)	Sep qtr 98	121.9	120.4	122.5	123.0	119.6	122.8	122.1	121.3	121.3
Average retail prices (cents)											
Milk, carton, supermarket sales	1 litre	Sep qtr 98	116	135	119	127	135	126	122	115	n.a.
Bread, white loaf, sliced, supermarket sales	680 g	Sep qtr 98	216	201	195	169	205	209	210	210	n.a.
Beef, rump steak	1 kg	Sep qtr 98	1 164	1 048	1 070	1 109	1 053	1 031	1 209	1 162	n.a.
Chicken, frozen	1 kg	Sep qtr 98	332	339	294	367	356	353	390	361	n.a.
Potatoes	1 kg	Sep qtr 98	108	111	114	62	130	72	108	120	n.a.
Coffee, instant (jar)	150 g	Sep qtr 98	662	608	617	570	583	608	615	591	n.a.
Scotch nip, public bar	30 ml	Sep qtr 98	339	315	264	359	377	265	327	263	n.a.
Private motoring petrol											
Leaded	1 litre	Sep qtr 98	72.6	69.8	61.4	71.0	71.6	77.4	79.2	74.9	n.a.
Unleaded	1 litre	Sep qtr 98	70.3	67.6	59.2	68.6	69.4	75.4	77.2	72.7	n.a.

(a) State estimates are not comparable to national estimates from the June quarter 1995 due to revised methodology used in Australian National Accounts, State Accounts (Cat. no. 5242.0).

(b) Base year: 1989-90=100.0.

<i>Indicator</i>	<i>Latest period</i>	<i>NSW</i>	<i>Vic.</i>	<i>Qld</i>	<i>SA</i>	<i>WA</i>	<i>Tas.</i>	<i>NT</i>	<i>ACT</i>	<i>Aust.</i>
POPULATION	Jun qtr 98	0.2	0.2	0.4	0.1	0.4	-0.1	0.5	0.2	0.3
LABOUR FORCE										
Employed persons (trend)	Dec 98	—	-0.1	0.3	0.5	0.1	-0.2	0.9	-0.1	0.1
Unemployment rate (trend)	Dec 98	—	-0.1	-0.2	-0.1	—	-0.2	—	-0.1	-0.1
WAGE AND SALARY EARNERS										
Public sector (trend)	May 98	—	0.7	-0.4	0.4	0.5	-0.2	-0.9	-1.0	0.1
Private sector (trend)	May 98	0.8	0.5	2.3	0.1	2.6	-0.2	-2.1	1.2	1.0
Total public and private sector (trend)	May 98	0.6	0.5	1.7	0.2	2.1	-0.2	-1.9	0.1	0.8
STATE ACCOUNTS(a)										
State final demand at 1989-90 prices (trend)	Yr 1996-97	2.8	2.6	5.2	0.8	3.3	0.2	4.6	3.6	2.4
State final demand at current prices (trend)	Yr 1996-97	6.2	4.2	5.7	1.0	4.2	2.7	7.3	-2.7	1.5
BUILDING APPROVALS										
Dwelling units approved (original)	Nov 98	13.7	11.7	-5.0	3.6	0.9	-22.3	-9.8	47.7	6.4
Dwelling units approved (trend)	Nov 98	-0.3	1.4	0.5	-4.8	-0.9	-1.6	2.2	-18.7	-0.3
Value of non-residential building approved	Nov 98	47.3	-45.5	31.2	44.0	-16.7	-48.7	124.6	63.2	-1.3
Value of all buildings approved	Nov 98	32.4	-23.6	6.1	20.4	-5.4	-34.3	28.0	19.3	3.5
ENGINEERING CONSTRUCTION										
Value of engineering construction work done	Sep qtr 98	-21.3	-9.7	-8.1	-18.6	9.0	-22.7	0.6	-26.3	-10.7
AVERAGE WEEKLY EARNINGS										
Full-time adult ordinary time (trend)	Aug 98	1.0	1.3	1.1	1.4	1.9	0.6	0.7	1.4	1.2
RETAIL TRADE										
Retail turnover (trend)	Nov 98	0.4	0.7	0.4	0.3	0.8	0.2	0.7	-0.1	0.5
HOTELS, MOTELS & GUEST HOUSE ACCOMMODATION										
Room nights occupied (trend)	Sep qtr 98	6.5	3.4	20.2	3.1	13.5	-14.1	34.5	-8.9	-3.7
Room occupancy rate (original)	Sep qtr 98	1.6	0.5	9.5	0.7	5.3	-5.9	17.1	-5.7	-3.4
NEW MOTOR VEHICLE REGISTRATIONS										
Trend	Nov 98	-0.8	-0.5	0.4	-2.2	-2.8	-1.3	2.4	-2.9	-0.8

	<i>Latest period</i>	<i>Syd.</i>	<i>Melb.</i>	<i>Bris.</i>	<i>Adel.</i>	<i>Perth</i>	<i>Hob.</i>	<i>Dar.</i>	<i>Canb.</i>	<i>Aust.</i>
CONSUMER PRICE INDEX										
Food	Sep qtr 98	1.1	1.6	0.5	1.8	1.5	2.0	120.6	0.6	1.3
Housing	Sep qtr 98	1.2	-1.0	0.7	1.0	0.8	0.1	1.5	0.4	0.3
Transportation	Sep qtr 98	-0.4	-0.8	-1.5	—	1.2	-0.1	-0.4	-0.9	-0.4
All Groups	Sep qtr 98	0.4	0.1	0.2	0.5	0.6	0.7	0.2	0.1	0.2
Average retail prices (cents)										
Milk, carton, supermarket sales	Sep qtr 98	—	—	—	—	—	0.8	-1.6	0.0	n.a.
Bread, white loaf, sliced, supermarket sales	Sep qtr 98	2.4	6.3	1.6	4.3	2.0	13.6	0.5	4.5	n.a.
Beef, rump steak	Sep qtr 98	-3.2	1.6	2.5	-1.4	2.4	1.9	-3.0	3.4	n.a.
Chicken, frozen	Sep qtr 98	-3.8	0.9	1.0	2.8	—	6.3	1.0	2.6	n.a.
Potatoes	Sep qtr 98	4.9	2.8	-0.9	-18.4	2.4	-6.5	-7.7	8.1	n.a.
Coffee, instant (jar)	Sep qtr 98	8.0	-2.1	-3.0	-2.7	-5.8	-11.4	-3.3	-8.9	n.a.
Scotch nip, public bar	Sep qtr 98	—	3.3	1.5	1.4	-0.5	—	0.3	1.5	n.a.
Private motoring petrol										
Leaded	Sep qtr 98	-1.2	-1.6	-4.7	-2.9	-3.9	-0.1	-2.8	-1.6	n.a.
Unleaded	Sep qtr 98	-1.4	-1.6	-4.7	-3.0	-4.1	-0.1	-2.9	-1.5	n.a.

(a) State estimates are not comparable to national estimates from the June quarter 1995 due to revised methodology used in Australian National Accounts, State Accounts (Cat. no. 5242.0).

SELF-HELP ACCESS TO STATISTICS

<i>PHONE</i>	Call 1900 986 400 for the latest statistics on CPI, Labour Force, Earnings, National Accounts, Balance of Payments and other topics. (Call cost is 75c per minute)
<i>INTERNET</i>	http://www.abs.gov.au
<i>LIBRARY</i>	A range of ABS publications is available from public and tertiary libraries Australia wide. Contact your nearest library to determine whether it has the ABS statistics you require.

WHY NOT SUBSCRIBE?

<i>PHONE</i>	+61 1300 366 323
<i>FAX</i>	+61 3 9615 7848

CONTACTING THE ABS

ABS provides a range of services, including: a telephone inquiry service; information consultancy tailored to your needs; survey, sample and questionnaire design; survey evaluation and methodological reviews; and statistical training.

<i>INQUIRIES</i>	<i>By phone</i>	<i>By fax</i>
Canberra	02 6252 6627	02 6253 1404
Sydney	02 9268 4611	02 9268 4668
Melbourne	03 9615 7755	03 9615 7798
Brisbane	07 3222 6351	07 3222 6283
Perth	08 9360 5140	08 9360 5955
Adelaide	08 8237 7400	08 8237 7566
Hobart	03 6222 5800	03 6222 5995
Darwin	08 8943 2111	08 8981 1218

POST Client Services, ABS, PO Box 10, Belconnen, ACT 2616

EMAIL client.services@abs.gov.au



2130380001996
ISSN 1320-808X

RRP \$15.50